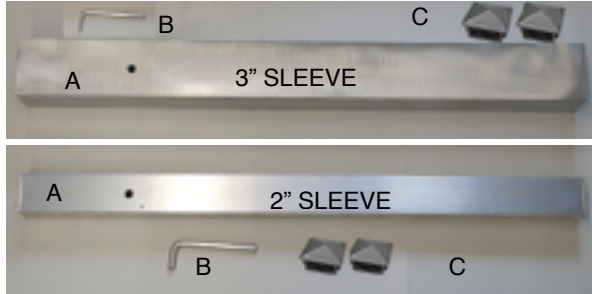


Ground **SLEEVE** for 2" or 3" Aluminum Poles



Parts:

- A** aluminum ground sleeve
- B** Pin
- C** Two Pyramid plastic caps

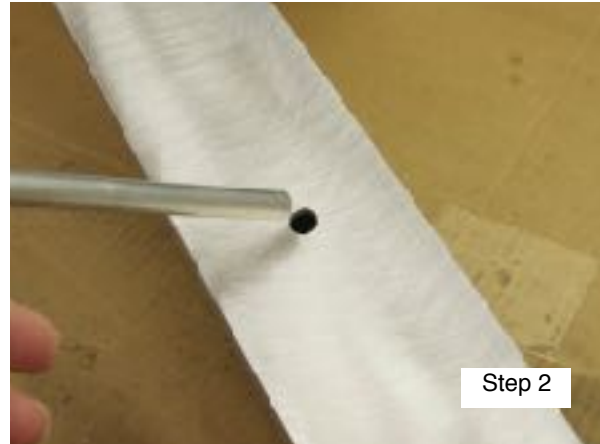
A ground sleeve is a very useful tool for any of our 2" or 3" square pole systems. When using a ground sleeve you can remove your ground stake for complete removal of your gourd rack.

IMPORTANT! *Test fit your ground stake inside the sleeve before installation.*

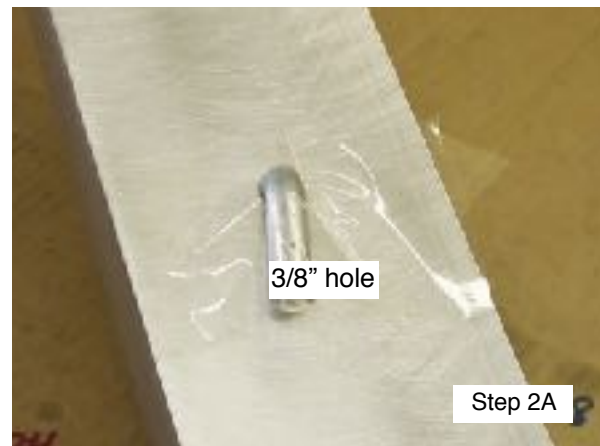
Step 1) For a 2" pole dig a hole 9" in diameter by 34" deep. For a 3" pole dig a hole 12" in diameter by 34" deep. Add 4" of small pea gravel or like to the bottom of the hole



Step 2) Place the small angle pin into the 3/8" hole. Place a piece of duck tape, or packaging tape over the pin to hold it into place (see photo



2A). This pin will keep your ground stake at the proper above ground height. Next, install one of your two plastic caps (c) into the bottom of the sleeve by pushing the cap in till it is flush with bottom of the sleeve.



Step 3) Place the ground sleeve into the hole, cap into the hole. Next, insert your aluminum ground stake into the sleeve. This will keep



Ground **SLEEVE** for 2” or 3” Aluminum Poles



cement from falling into the sleeve and help you level the sleeve. Make sure the top of the sleeve is at ground level, and orient the sleeve with ground stake in the direction you want.

Step 4) Mix up your cement according to the directions on the package. We used 2 80# bags of QuickCrete to fill our hole. You may need a larger hole depending on your ground conditions.

Step 5) Fill the hole with cement. Don't let any of the cement dribble down the side of the ground stake, so keep a cloth handy to wipe any dribbles off.

Step 6) Check for plumb by placing your level against the ground stake on 2 different sides.

Step 7) Allow 24 hours for concrete to cure before continuing installation.

Step 8) During the off season or when not using the sleeve, and to keep water from entering your sleeve, use the second plastic cap at the top of your sleeve. Insert the cap into the sleeve, make sure it is seated all the way to the sleeve. Later you can use a flat headed screw driver to pry it off.

TIP! Place some lithium grease or engine oil (or like) on the ground stake. The grease-oil needs only be placed on the ground stake 24” or the section of the ground stake that will be inside the sleeve. This will shed water away and aid in ground stake removal.



Troyer's Birds' Paradise
20785 Morris Rd
Conneautville, PA 16406
814-587-2756